

TERRAZHEL

contents

Product data 3

Wall Covering 4-5

Information 6



product data



Product description: Textured 3-Dimensional Surface Material

Summary: Terrazhel is a 3-Dimensional surface material made of PVC board and natural shells. It is a lightweight, durable and resistant to weathering and insects. The PVC resin used is made from the combination of natural gas, the components of which are fossil fuel and salt.

Main Material: Natural Capiz Shells

Applications: Interior Wall Coverings
Furniture Surface Material
Aesthetic Applications

Limitations: Not applicable for areas that are exposed to direct sunlight and high moisture such as the kitchen and bathroom areas.

Sizes / Design: 20 Designs Available (<http://www.lacasadeco.com/products.php>)
30 cm x 30 cm x 1.5 cm
30 cm x 60 cm x 1.5 cm

Environment: Life-cycle analysis and independent studies have shown PVC's environmental impact to be favorable when compared to other materials used for construction. PVC can be recycled and can be used in mixed plastic recycling. It can be also safely incinerated and is formaldehyde free. In relation to shells, the Bureau of Fisheries & Aquatic Resources of the Philippines issued a certificate allowing harvesting of Capiz shells since it is a rapid-renewable resource and is not considered endangered at all.

Test / Examinations: EN-71 Part 3

wall covering

30X30
X15
CENTIMETERS

30X60
X15
CENTIMETERS

MADE
NATURAL
CAPIZ
SHELLS

PASSED
EN-71 Part 3

detail



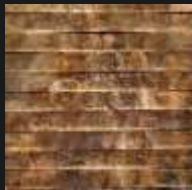
Lineare



Drados



Onda - Gold



Tessu - Gold



Korteloco - Gold



Spira - Gold



wall covering

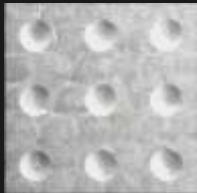
30X30
X1.5
CENTIMETERS

30X60
X1.5
CENTIMETERS

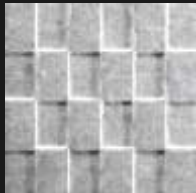
MADE
NATURAL
CAPIZ
SHELLS

PASSED
EN-71 Part 3

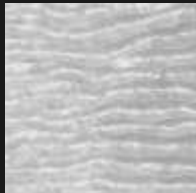
detail



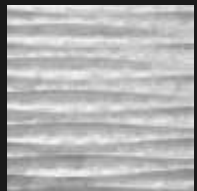
Concavo - Pearl



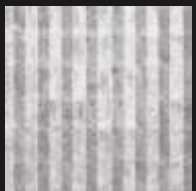
Checker-Pearl



Onda - Pearl



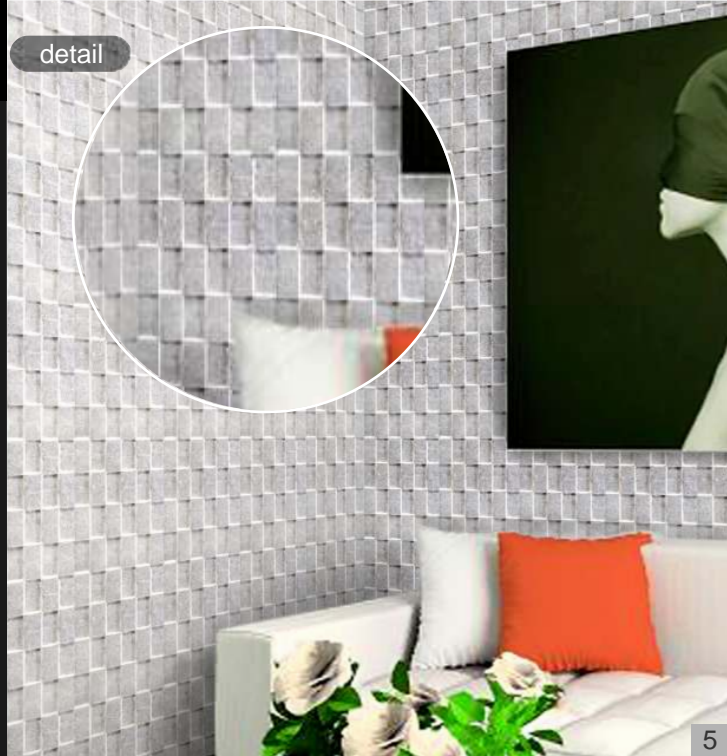
Latura - Pearl



Picco - Pearl



Spira - Pearl



Installation

Using vinyl- over- vinyl (VOV) adhesive. Apply even coat of adhesive to the product, being extra care-ful at its edges. Allow installed tiles to rest for 5 to 8 minutes. For bigger size of the capiz tiles airgun tucker can be used together with adhesive to ensure the installation. Immediately wipe off excess paste with a soft damp cloth and dry with a clean soft cloth afterwards. If there is adhesive on the surface of capiz, and can not be cleaned by damp cloth, use dilute alcohol on the soft cloth and wipe it off.

Cutting and repair

Trim with cutting machine. (To avoid damage, capiz surface must be face-up when cutting.) Slight irregularities on the edges can be remedied by gentle hand sanding of edges with a sanding block or finer sandpaper, then apply a polyurethane coat to seal it. (Always test on scrap materials before applying on any given installed surface.)

Seams

If gaps occur at the joints of tiles, use similar color latex caulk on tiles. Any excess filler/caulk must be removed immediately. The area must then be washed down with soapy water to remove any residue. Wipe it off but avoid scratching the surface.

Clean and Care

Wipe the area using the soft damp cloth. Dry with a soft cloth to avoid scratching the surface. Material flaking might occur. Do not peel it off instead cut off protruding flakes with a sharp razor blade then apply polyurethane to seal it. Do not rub hard on its surface.

Tools

Cutting machine. Air-gun tucker. Flat surface working table. Vinyl over vinyl or non-water based adhesive, polyurethane coat, latex paint. Clean cloth.





additional information

- Capiz tiles are not to be soaked in water or to be installed in areas where it comes in direct contact with water (e.g. kitchen and bathroom). A water resistant polyurethane coat may be applied to prevent absorption of moisture.
- Flaking may occur during shipment or installation. Do not peel off flakes. Instead, use a sharp blade to delicately cut off excess flakes and gently finish with sandpaper. Wipe clean and apply a coat of polyurethane to secure.
- Use of an air-gun tucker may cause a small hole on the tile. It is recommended that latex paint be used to fill the hole and apply a coat of polyurethane to seal.
- Because capiz is a natural material, fading or slight changes in color may occur. It is best that the tiles not be exposed to any direct or bright sunlight.
- Contact a water-based polyurethane supplier for correct application procedures. It is best to use one that can prevent yellowing and/or discoloration. La casa deco will not be held responsible for any undesirable effect of polyurethane application.



la casa deco, inc.

www.lacasadeco.com

Philippines

China

Taiwan